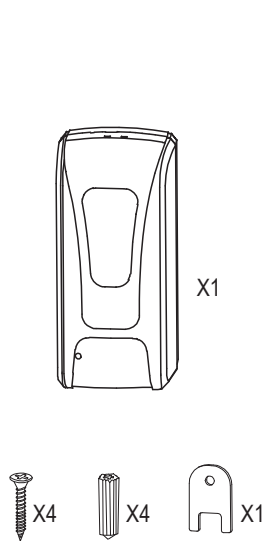
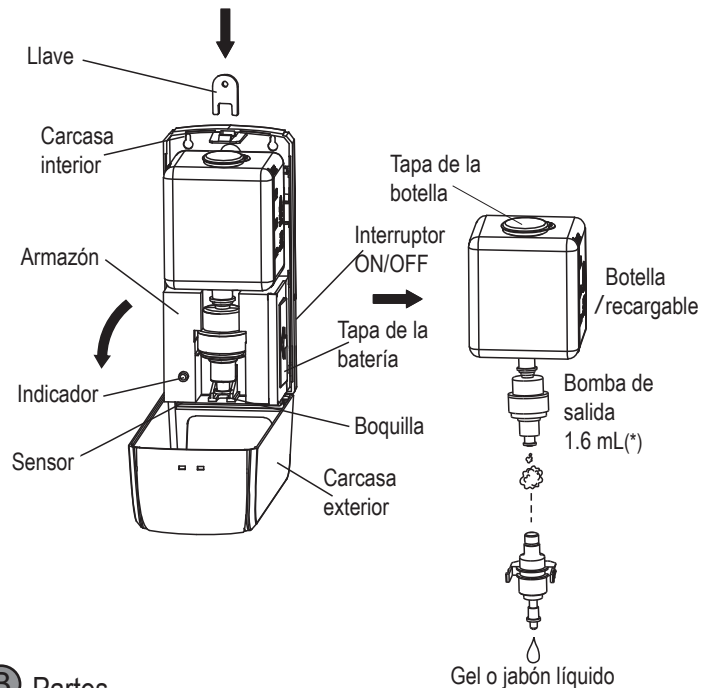


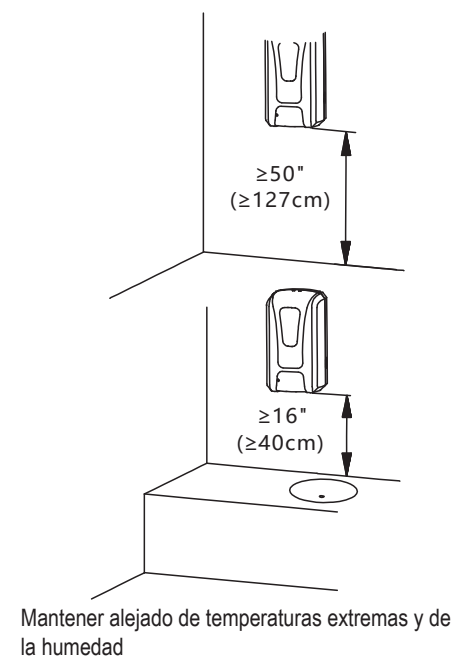
# Manual de instalación del dispensador de hidrogel sin contacto



**A** Contenido del pack

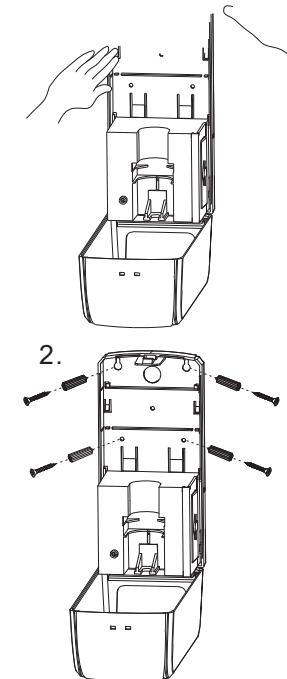


**B** Partes

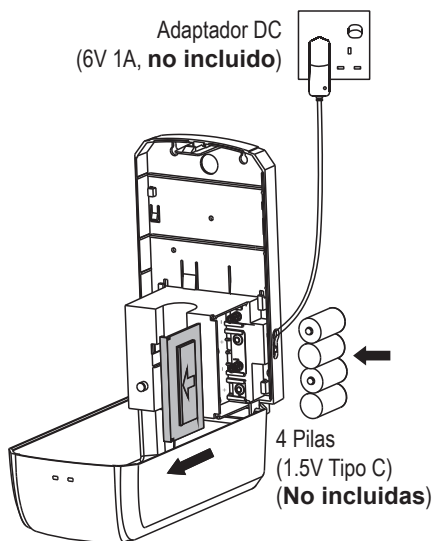


Mantener alejado de temperaturas extremas y de la humedad

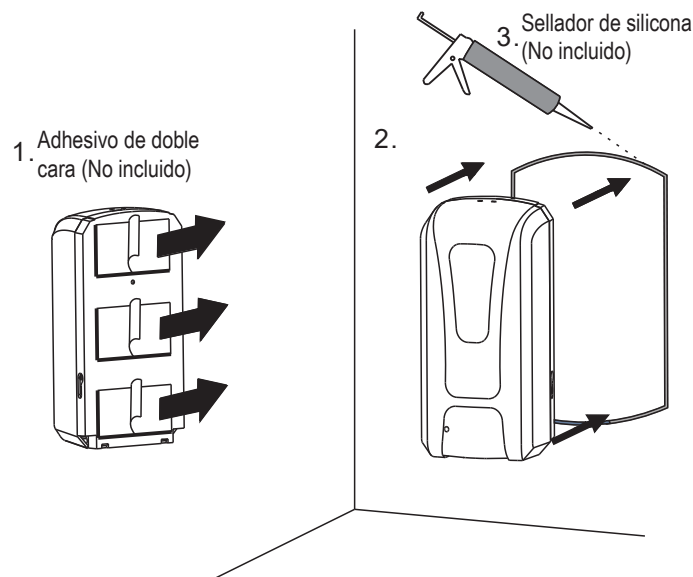
**C** Altura desde el suelo



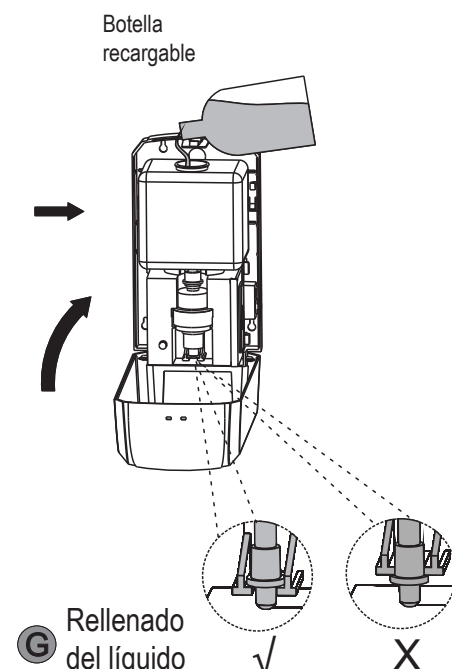
**D** Tornillos



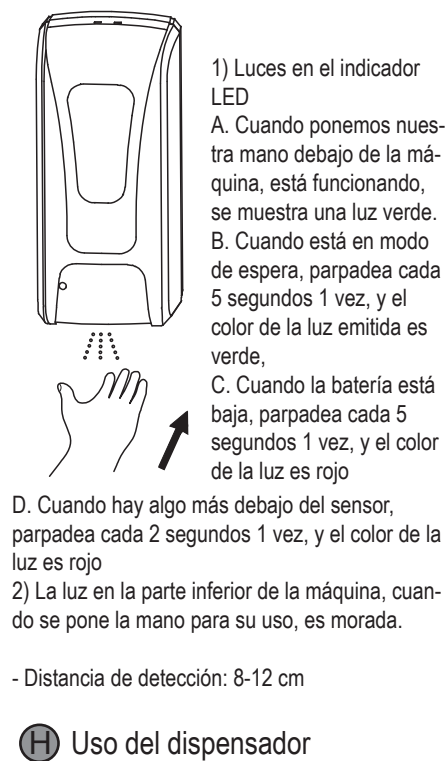
**E** Instalación de las pilas / Adaptador DC



**F** Instalación adhesivo (sin tornillos)



**G** Rellenado del líquido

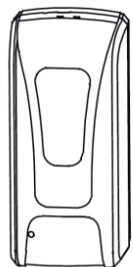


**H** Uso del dispensador

1) Luces en el indicador LED  
 A. Cuando ponemos nuestra mano debajo de la máquina, está funcionando, se muestra una luz verde.  
 B. Cuando está en modo de espera, parpadea cada 5 segundos 1 vez, y el color de la luz emitida es verde,  
 C. Cuando la batería está baja, parpadea cada 5 segundos 1 vez, y el color de la luz es rojo  
 D. Cuando hay algo más debajo del sensor, parpadea cada 2 segundos 1 vez, y el color de la luz es rojo  
 2) La luz en la parte inferior de la máquina, cuando se pone la mano para su uso, es morada.

- Distancia de detección: 8-12 cm

# SENSOR FOAM SOAP DISPENSER INSTALLATION

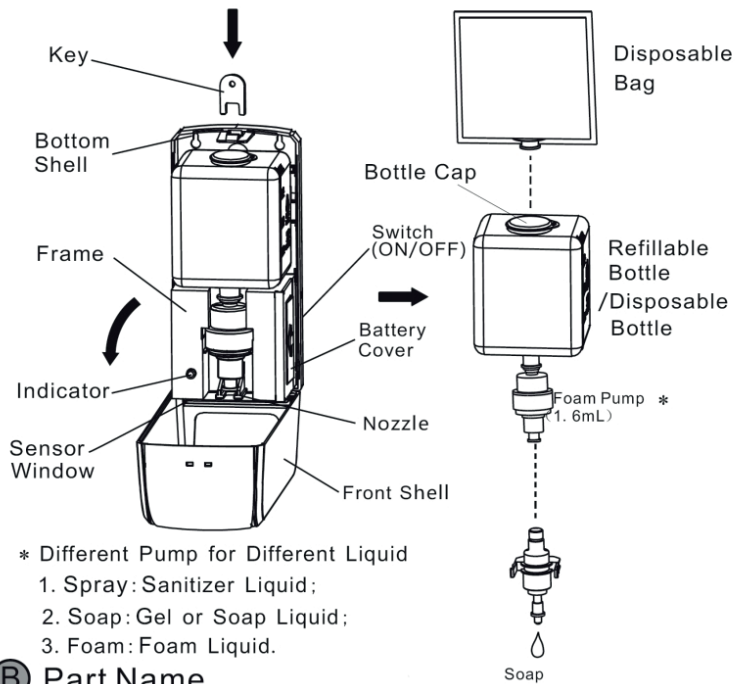


1X \*



\* we have different shape but same installation.

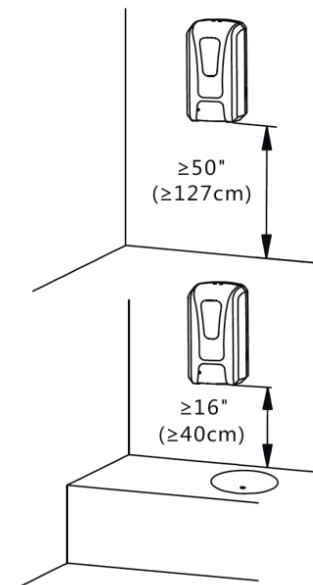
## A Packing List



\* Different Pump for Different Liquid

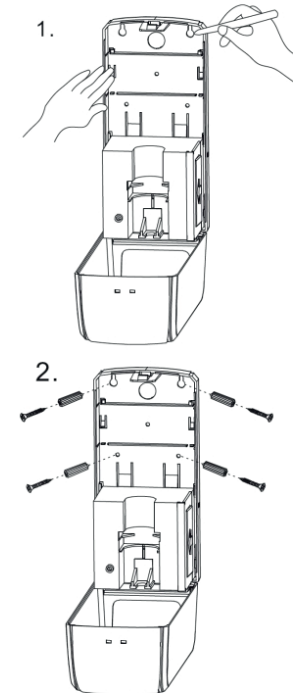
1. Spray: Sanitizer Liquid;
2. Soap: Gel or Soap Liquid;
3. Foam: Foam Liquid.

## B Part Name

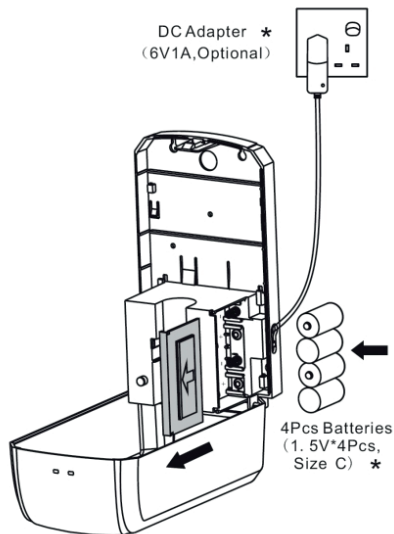


\* keep away from sunshine and humid place

## C Height from Floor/Table



## D Way for Screw

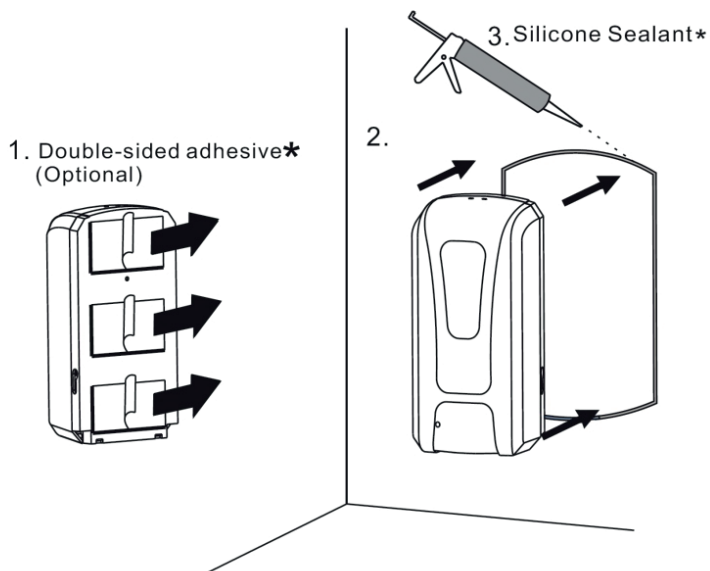


DC Adapter \*  
(6V1A, Optional)

4Pcs Batteries  
(1.5V\*4Pcs,  
Size C) \*

\* The Standard Packing is not including DC Adapter and Batteries

## E Install Batteries/DC Adapter



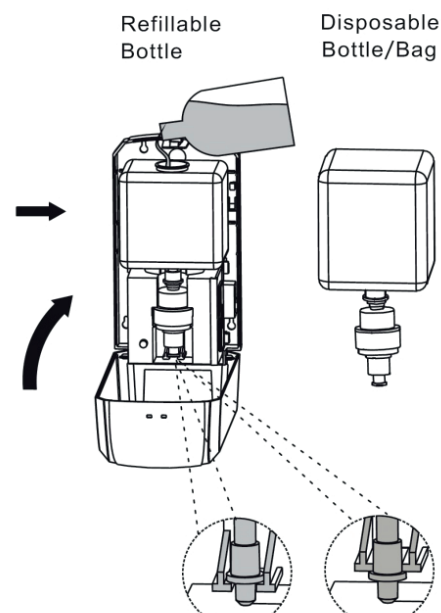
1. Double-sided adhesive\*  
(Optional)

2.

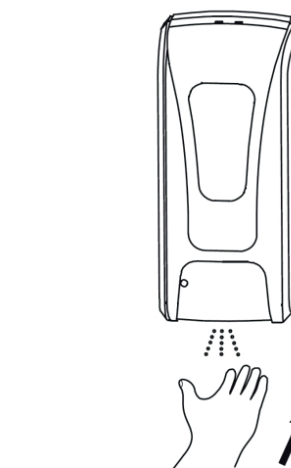
3. Silicone Sealant\*

\* The standard Packing is not including Double-sided adhesive and Silicone sealant

## F Installation with Adhesive Backing (no screws)



## G Fill Liquid



- UV disinfection
- LED Light:
  1. green color 5 seconds flush: working condition;
  2. red color 5 seconds flush: low power for battery and change;
  3. red color 2 seconds flush: something under sensor and remove it;
- Sensing Distance: 8-12cm

## H Enjoy hand sanitizing